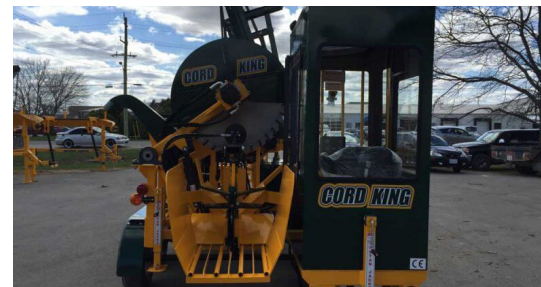




CORD KING CS20-30 MKII

CONTACT US FOR PRICING AND TO CUSTOMIZE YOUR MACHINE TODAY!



STANDARD EQUIPMENT:

- 74 HP Deutz Turbo Diesel Engine
- 44" carbide tooth slasher saw
- Splitter force 34-ton
- Dual joystick controls with auto split
- 7-way hydraulic repeater wedge or 8-way hydraulic adjustable star wedge
- 16' infeed
- 3-leg hydraulic folding live deck
- Hydraulic log stop adjustable 12-24" length
- Operator safety cage with deluxe seat
- Automatic clamping
- Fuel Capacity: 30-gallon fuel tank
- Hydraulic Reservoir Capacity: 80 US gallons
- Hydraulic Oil Cooler: 35,000 BTU/hr
- 12k lbs tandem axles with electric brakes and running lights
- 2 5/16" ball hitch or pintle hitch (your choice)

PERFORMANCE:

- Production Rate: up to 6 full cords/hr
- Cycle Time (cut & split): every 2 to 5 seconds
- Maximum Log Diameter: 20"
- Maximum Log Length: 30' (butt on the deck)
- Estimated Fuel Consumption: 1.5 – 2 GPH
- Weight: 11,850 lbs. with integrated conveyor
- Transport Dimensions: 8'-0" wide, 23'-0" long, 12'-8" high

OPTIONAL EQUIPMENT:

- 42-ton splitter
- Extended infeed conveyor to 20'
- 4-, 6-, 8-, 12- or 16-way hydraulic adjustable splitting wedges
- Extra live deck legs, dual drive available
- Trap doors for last piece assist with endcut bypass
- Heated operators cab
- Air conditioning with insulation package
- 24' to 40' stand alone offloading conveyor
- 12' or 16' integrated offloading conveyor
- Overhead log grapple assist (crooked wood)
- Available with tractor PTO-Drive
- Available with a 3-phase electric motor option