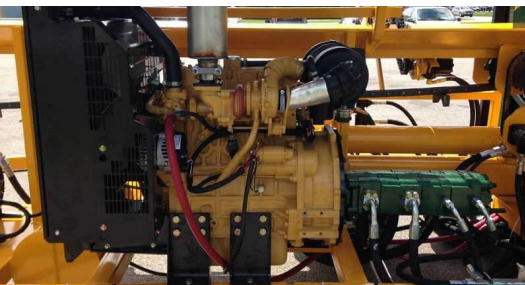




CORD KING CS18-30R

CONTACT US FOR PRICING AND TO CUSTOMIZE YOUR MACHINE TODAY!



STANDARD EQUIPMENT:

- 60 HP Doosan Turbo Diesel Engine
- 40" carbide tooth slasher saw
- Splitter Force 29 ton
- 6-way hydraulic adjustable star wedge or 7-way hydraulic repeater wedge
- 16' infeed
- 3-leg hydraulic folding live deck
- Hydraulic log stop adjustable 12-24' length
- Operator safety cage with deluxe seat
- Automatic clamping
- Auto-split (1 button complete splitting cycle)
- Fuel Capacity: 30-gallon fuel tank
- Hydraulic Reservoir Capacity: 55 US gallons
- Hydraulic Oil Cooler : 35,000 BTU/hr
- 12k lbs tandem axles with electric brakes and running lights
- 2 5/16" Ball Hitch or Pintle Hitch (your choice)

PERFORMANCE:

- Production Rate: up to 4 full cords/hr
- Cycle Time (Cut and Split): every 3.5 seconds
- Maximum Log Diameter: 18"
- Maximum Log Length: 30' (butt on the deck)
- Estimated Fuel Consumption: 1.5 GPH
- Weight: 10,600 lbs
- Transport Dimensions: 8'-0" wide, 23'-0" long, 12'-8" high

OPTIONAL EQUIPMENT:

- 74 HP Deutz Turbo Diesel Engine
- 34-ton splitter (required for 8-, 12- or 16-way wedge)
- Extended infeed conveyor to 20'
- Extra live deck legs, dual drive available
- Trap doors for last piece assist (easy end-of-log cutting)
- Heated operators cab
- Air conditioning with insulation package
- 24' to 40' standalone offloading conveyor
- 12' or 16' integrated offloading conveyor
- Overhead log grapple assist (crooked wood)
- Available with tractor PTO-Drive
- Available with a 3-phase electric motor option